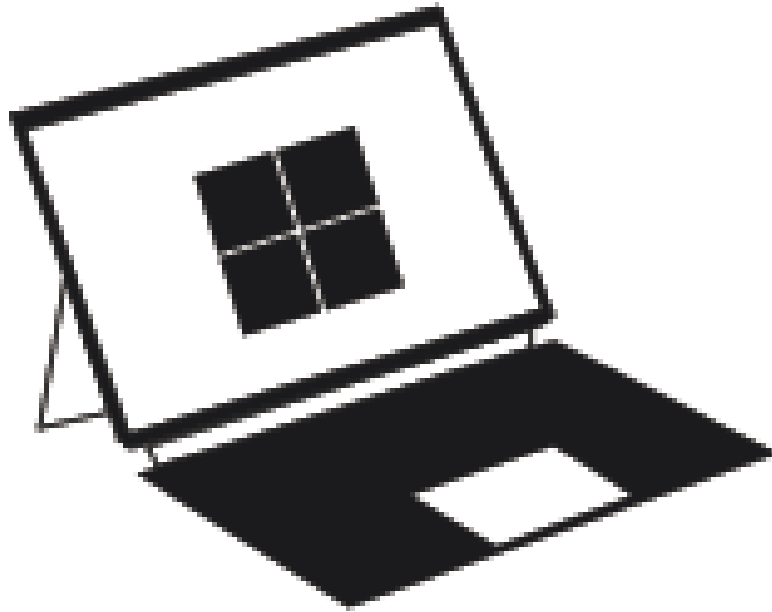




Changing touch
Touch our good life easily



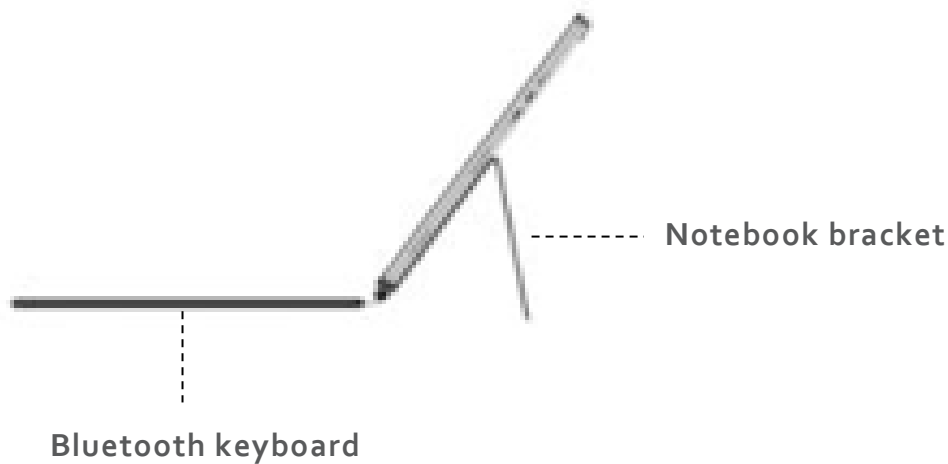
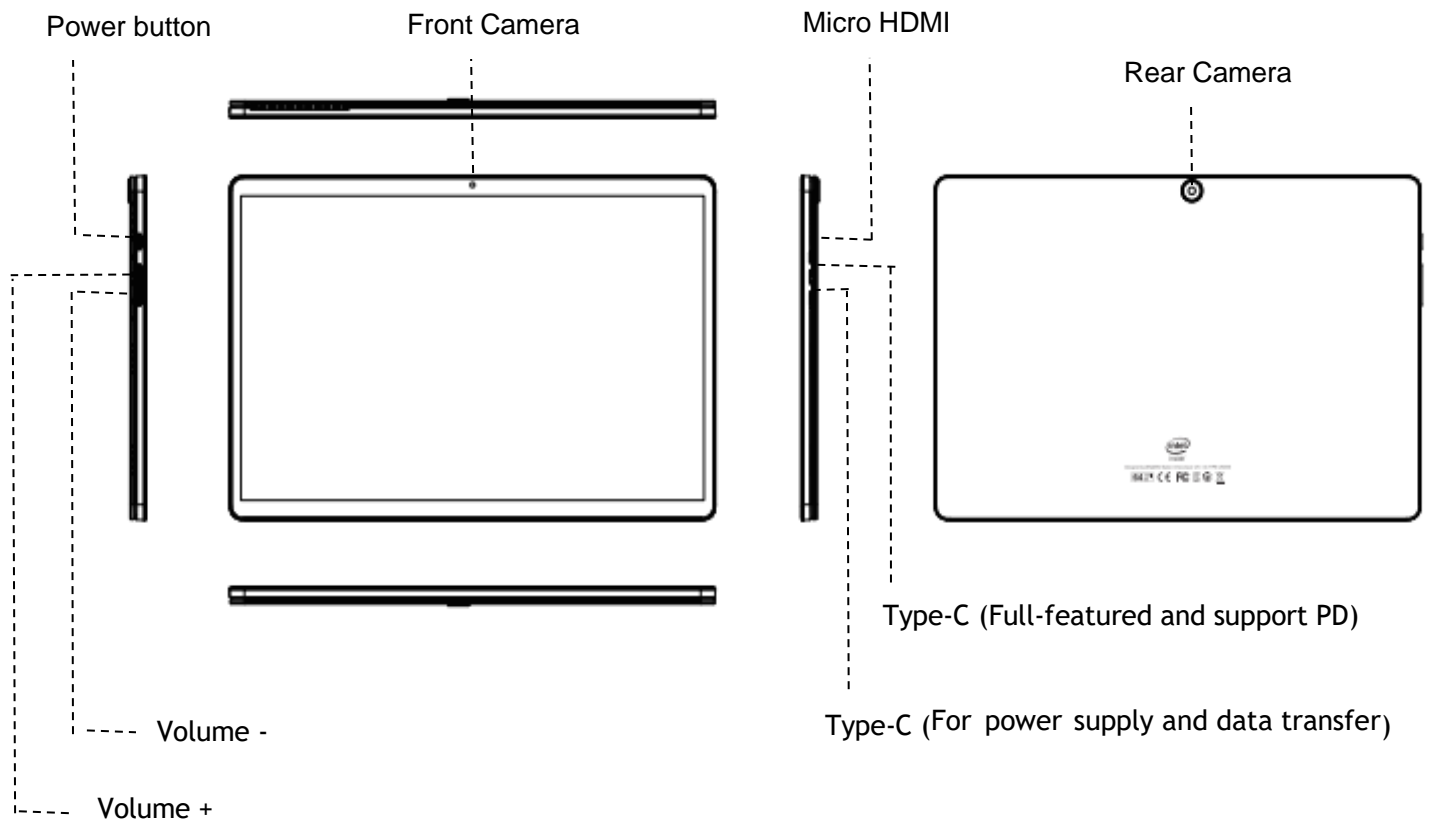
L14 Graphics
Atombook

USER MANUAL

Contents

| | |
|--------------------------------|---|
| ➤ Monitor Introduction | 3 |
| ➤ Package List | 4 |
| ➤ FAQ | 5 |
| ➤ Monitor Specifications | 6 |

Monitor Introduction



The way to turn on the laptop is to press the button, please press the power button to turn on it. Please click "power off" in the OS to turn off the laptop. Pressing the power button for several seconds by force to turn off the laptop can be used in special circumstances. What customers need to pay attention to is that frequent power-off by force may cause system files missing or crash of the laptop.

Package List



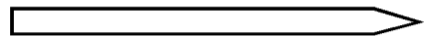
Atombook



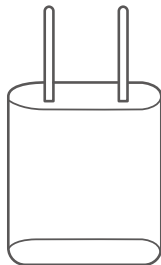
Bluetooth keyboard



Keyboard
charging cable



Stylus pencil



Adapter



User Manual

| Questions | Answers |
|-----------------------|--|
| Laptop can't boot | <ol style="list-style-type: none"> 1. Check if the battery is fully charged. 2. Check the power adapter before restarting the machine again. 3. If it is still unable to boot after charging, please contact us. |
| WIFI can't work | <ol style="list-style-type: none"> 1. Please confirm whether there is a WIFI hotspot. 2. Make sure that the is connected to the WIFI (enter the settings to check). 3. Please confirm the WIFI signal strength and link permission. |
| Active Stylus Support | <p>The laptop supports MPP protocol active stylus, but due to the different manufacturers of active stylus, the drawing effect will be different, and the actual effect shall prevail.</p> |

Monitor Specifications

| | |
|--------------------|--|
| Model | L14 Graphics |
| System | Windows |
| CPU Brand | Intel N100 |
| RAM/ROM | 16GB/256GB |
| Screen size | 14.1inch |
| Resolution | 1920*1200 |
| Color Gamut | 100%NTSC |
| Brightness | 300CD/M ² |
| Network Connection | WIFI6 (802.11ax1) |
| HOT function | Bluetooth 5.2 |
| Speaker | 8Ω/1W*4 |
| Touch | Support (10 finger) |
| Active Stylus | Support (MPP protocol) |
| I/O | 1*512G M.2 2242 2* Type C 1*Micro HDMI |
| Battery capacity | 60Wh |
| Dimension | 317.38*214.34*10.2mm |



Changing touch
Touch our good life easily

<https://changingtouch.com>

If you need any help, please don't
hesitate to contact us via the email address
help@changingtouch.com
and we will help you solve the problems as soon as possible.